



# PRESCON MIDTOWN BAY — MAHIM —

Explore the  
digital twin  
by scanning  
the QR code



Powered by **openhaus**



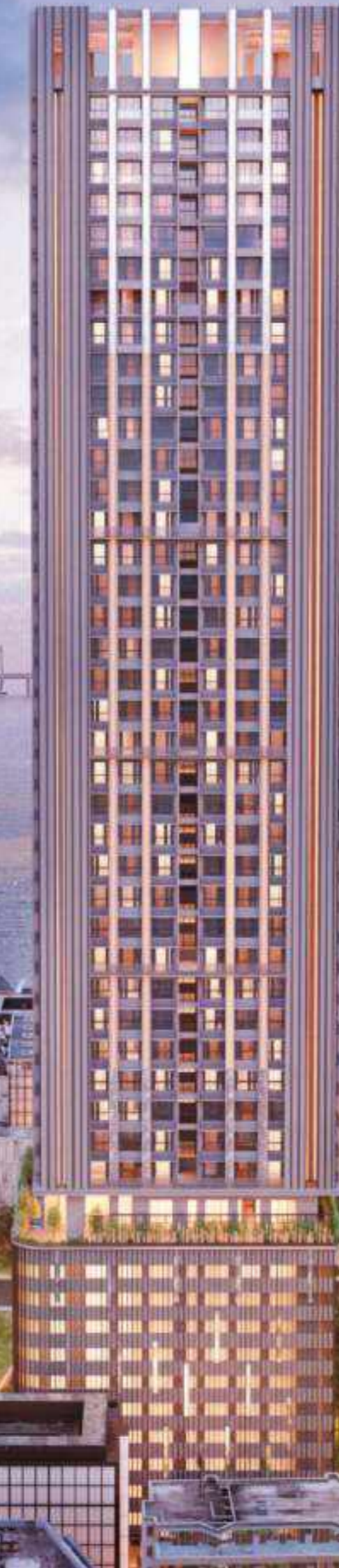
## Live *Above.*

Is living in Mumbai the same experience if not lived in the heart of it?

Relocate to the centre of work, education, recreation and attention. Right off Cadel Road, Midtown Bay ensures that you have access to all of Mumbai's privileges at ease. Life will be a breeze — even more so since you would be living right next to the sea. Now, isn't this the Mumbai dream?

*The Mumbai Life,*  
as it should be.

By virtue of its extremely favourable central location in the vicinity of Chhatrapati Shivaji Maharaj Park, Midtown Bay offers you the best of Mumbai on a platter. This is where South Mumbai really begins, and Bandra, the queen of the suburbs is your neighbour. Midtown Bay's monumental skyscraper gives you an elevated view of Mumbai – a symbol of all your dreams coming true!





## *The Midtown Bay* Location Advantage

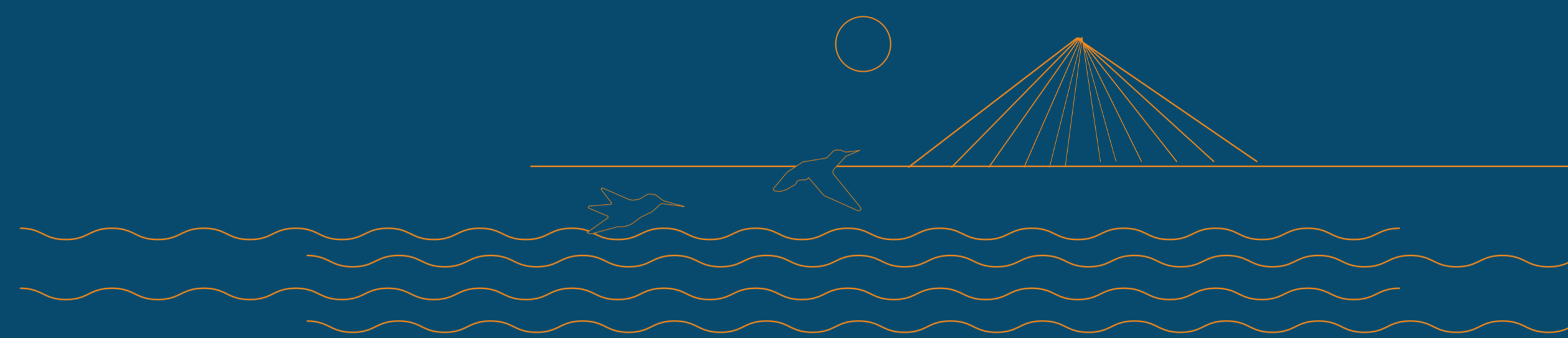
Let's go beyond dreams and truly experience a vibrant lifestyle that is common to waterfront cities across the world. A plethora of outdoor and indoor amenities and an experiential approach to planning by our team of industry stalwarts has truly set this development apart. When it comes to quality of life, Midtown Bay has it all!



Breathtaking  
locations deserve  
*hashtag-worthy homes*

Our project Midtown Bay is true to its location - Mahim Bay. The Marvel of the bay is quietly highlighted by the majestic Bandra Worli Sea-link. Overlooking it, is our 45-storey mammoth structure that will dominate the Mumbai skyline, while it's gorgeous lit façade will only flatter it.

**As you  
would know,**



the view  
is always better from the top

Vistas - **West**



Vistas - **South**





Vistas - **North**



Vistas - *East*



# Quick commute is nothing less than a miracle in Mumbai.

**HOP TO WORK**  
 BKC: 11 mins  
 Lower Parel: 16 mins  
 Jio Convention Centre: 11 mins

**SKIP TO SCHOOL**  
 Bombay Scottish School: 4 mins

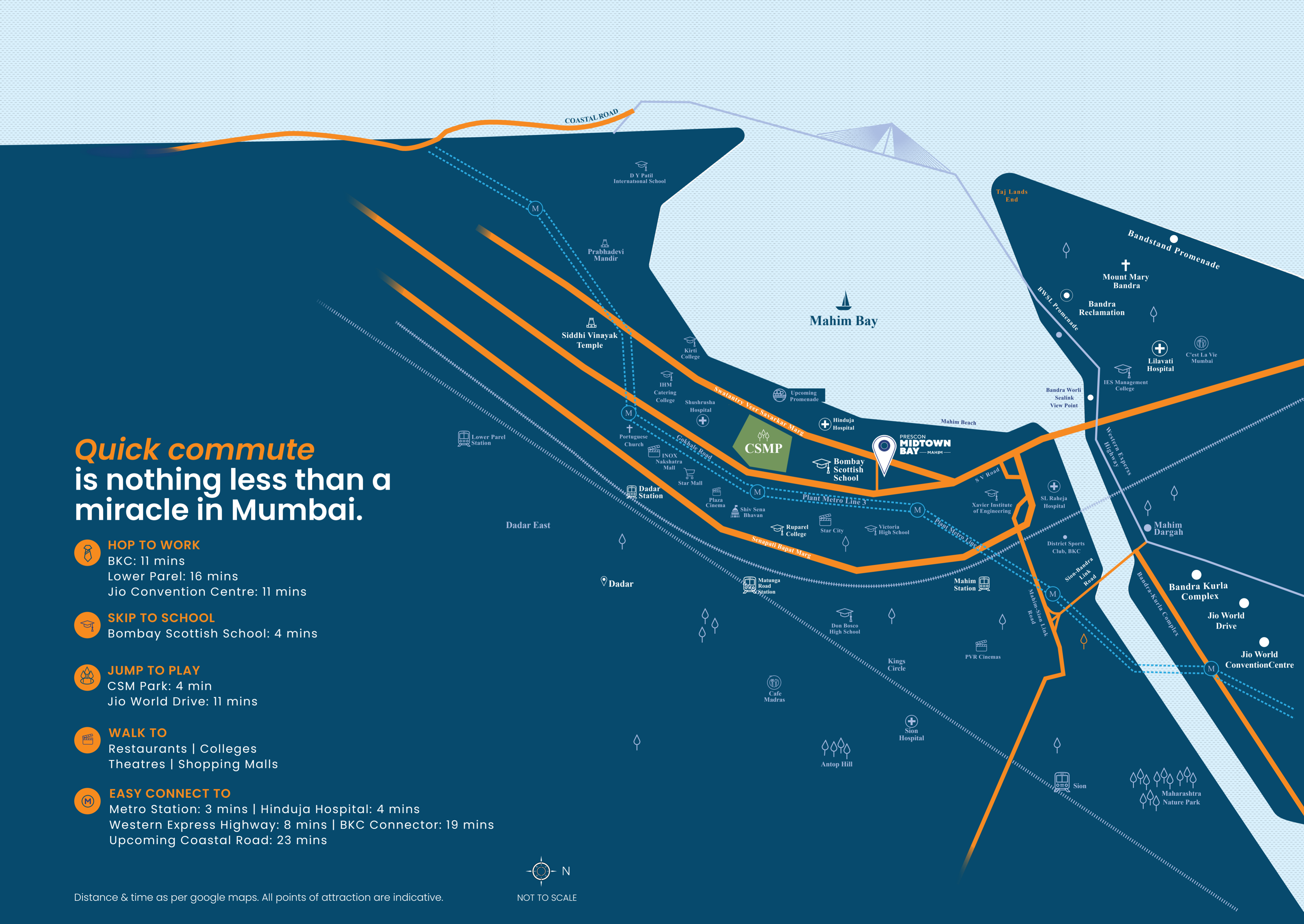
**JUMP TO PLAY**  
 CSM Park: 4 min  
 Jio World Drive: 11 mins

**WALK TO**  
 Restaurants | Colleges  
 Theatres | Shopping Malls

**EASY CONNECT TO**  
 Metro Station: 3 mins | Hinduja Hospital: 4 mins  
 Western Express Highway: 8 mins | BKC Connector: 19 mins  
 Upcoming Coastal Road: 23 mins



Distance & time as per google maps. All points of attraction are indicative.



You're not just  
buying a house,  
you're buying  
*a neighbourhood*



### COMMUTE - RAIL

Sitladevi Metro Station 650m / 3mins  
Mahim Railway Station 1.4km / 5mins  
Dadar Railway Station 2.8km / 9mins  
Bandra Railway Station 2.8km / 12mins



### COMMUTE - ROAD

Sitladevi Temple Road 90m / 1min  
Lady Jamshedji Road 650m / 3mins  
Tulsi Pipeline Road 800m / 5mins  
Matunga Flyover 1.1km / 5mins  
Western Express Highway 1.8km / 8mins  
Bandra-Worli Sea Link 4.3km / 16mins



### AIRPORT

Chhatrapati Shivaji Maharaj 12.3km / 22mins  
International Airport



### HEALTHCARE

Hinduja Hospital 700m / 4mins  
S L Raheja Hospital 2.2km / 9mins  
Lilavati Hospital 3.5km / 12mins  
Tata Memorial Hospital 4.8km / 19mins  
KEM Hospital 4.8km / 20mins



### COLLEGE

Ruparel College 1.6km / 8mins  
IES Management 3.4km / 15mins  
Asian Heart Institute 5.3km / 19mins



### SCHOOL

Victoria High School 200m / 2mins  
Bombay Scottish School 700m / 4mins  
Canossa High School 950m / 5mins  
IES Modern High School 2.3km / 8mins



### WORSHIP

Sitladevi Temple 300m / 2mins  
Jain Temple 500m / 2mins  
Mahim Dargah 900m / 6mins  
St. Michael's Church 1.2km / 8mins  
Our Lady Of Salvation Church 2.2km / 9mins  
Siddhivinayak Temple 3km / 9mins  
Hanuman Temple 3.3km / 16mins  
Mount Mary Church 4.6km / 18mins



### ENTERTAINMENT

Inox Nakshatra Mall 2.1km / 8mins  
PVR Cinemas 4.5km / 19mins  
Palladium Mall 6.0km / 21mins



### RECREATION

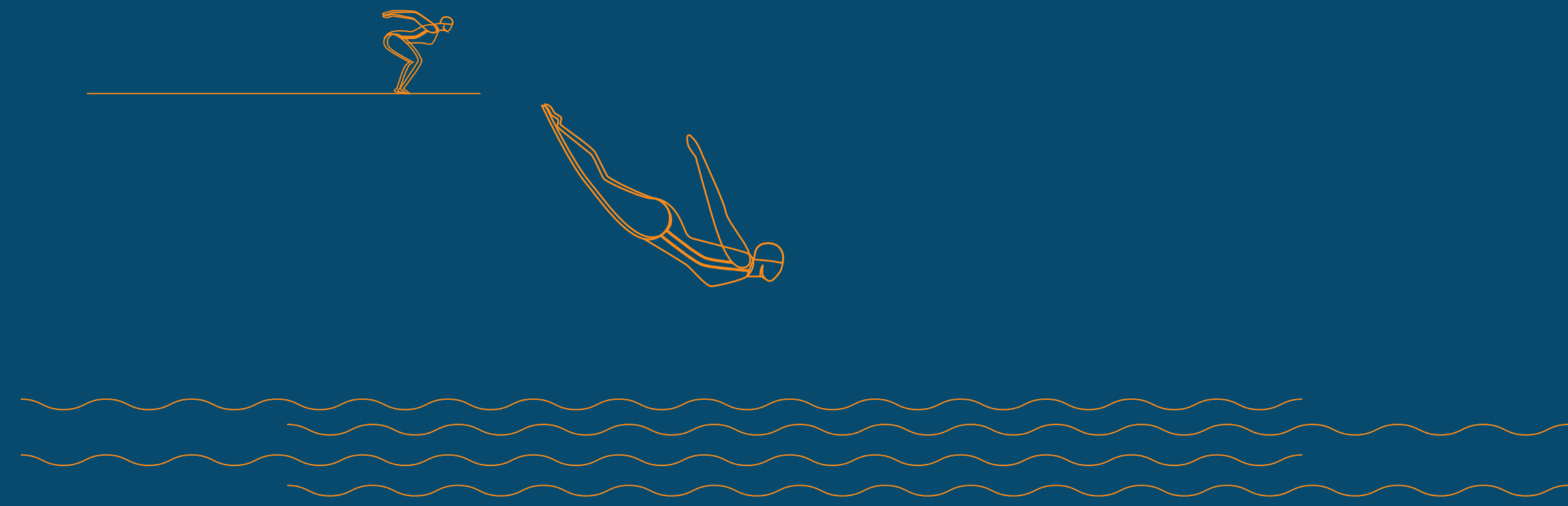
Mahim Beach 700m / 4mins  
CSM Park 1km / 4mins  
Dadar Chowpatty 2.1km / 7mins  
Mahim Nature Park 4.7km / 14mins



### BUSINESS

BKC 4.2km / 11mins  
Lower Parel 5.4km / 16mins

Presenting  
*The Sky-grade lifestyle*





## **Terrace Level**

- Sky Jogging Track
- Bar and Lounge
- Barbeque
- Outdoor Theatre
- Zen Garden
- Yoga & Activity Deck

## **E Deck Level**

- Infinity Pool
- The Café
- Gym
- Games Room
- Banquet Hall
- Creche
- Kid's Play Area

## **12 Parking Levels**

- 2 basements and 10 podium parking
- Drive-in ramp to each level
- Independent surface car parking
- Electric car charging stations

## **Ground Level**

- Grand Entrance Lobby
- Business Centre
- Outdoor Multipurpose Court
- Landscaped Gardens

# Experience new heights at *the Ground Level*

You will forget the buzz of Mumbai, as soon as you enter the gates and will rejoice in the warmth of the sky. Here, nature and art naturally come together to express not just the stature of our members, but to serve them a lifestyle, that's only sky-grade.





PRESCON  
**MIDTOWN  
BAY**

Grand  
*Entrance Lobby*





Shot On Site

## The Art of *Work-Life Balance*



Library



Coffee Shop



Meeting Pods

Shot On Site



Representative Image



Artist's Impression

## Recreation *limitless*

Pamper yourself with luxury on the Entertainment Deck. Whether it's for a swim that overlooks the gorgeous seascape or to lounge at the Open Café, our sky-grade amenities cover it all.



## Dive into the *'Sea-link pool'*

Reach out for the sun, feel the waves, be one with the sea. The Horizon Edge Swimming Pool, where you can really soak in the view.

# Pool Lounge



Kids Pool



Jacuzzi



Sunken Deck







## Banquet



Alfresco Seating



Kitchen

# Kid's Play Area



Representative Image



Representative Image

## May they *reach for the stars*

Our children need the space to run and play. An active, social life is important for their growth. In a city cramped for space, you have found yourself a miracle!



Representative Image

Crèche



## The *Top of the World* experience

Take in the sea, and feel the sky, you're 45 storeys high! Begin an active life at sunrise with your choice of fitness and round it up with an active social life at sunset.

Welcome to the Rooftop Level where it isn't difficult to have your head in the clouds.



# Discover *Outer Peace*



The Rooftop  
Zen Garden



The Rooftop  
Café



The Rooftop  
Barbeque Pavilion

Take a stroll alone, have an intimate conversation at the cafe or barbecue with your buds. You can never get used to a view that takes your breath away. Amidst the clouds, you can only experience serenity.



## Seating Alcove



Bar

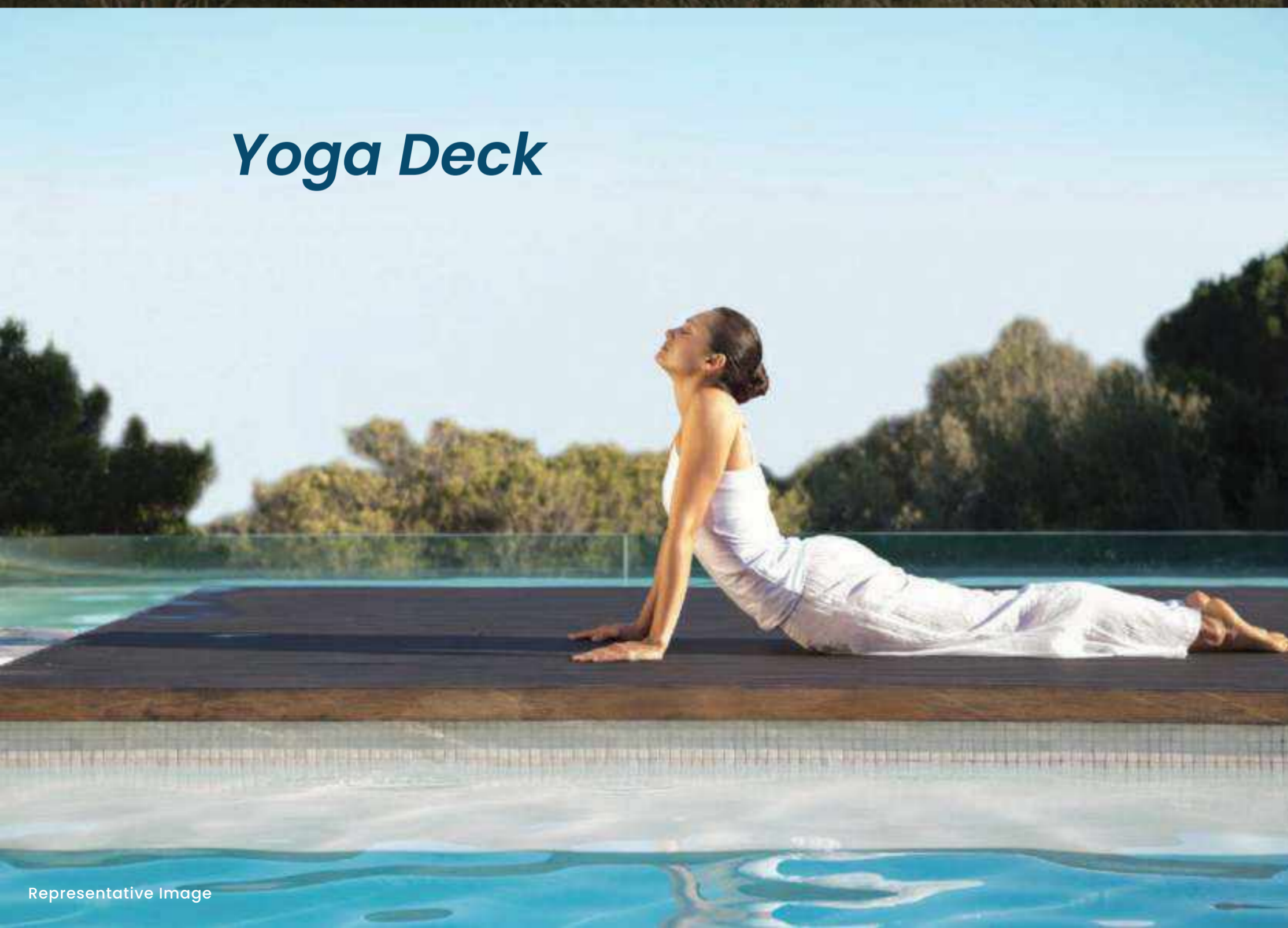


Barbeque



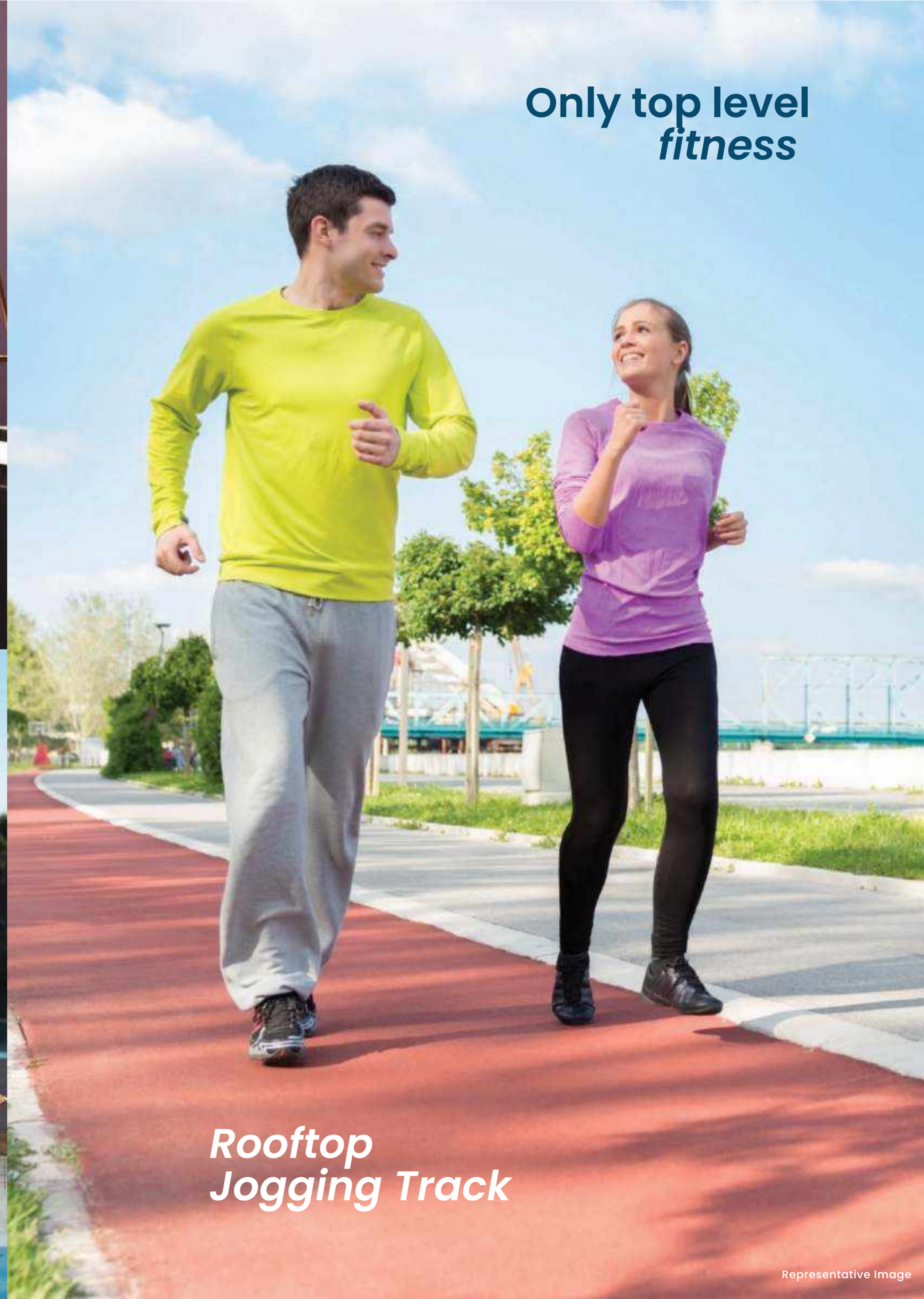
**Outdoor Theatre**

Artist's Impression



**Yoga Deck**

Representative Image



**Only top level  
fitness**

**Rooftop  
Jogging Track**

Representative Image

The perfect backdrop  
for every  
*social occasion*



The Rooftop  
Outdoor Cinema



The Activity  
Deck



The Viewing  
Pavilion

Discover photo opportunities at your home's very own rooftop. Whether you're watching a movie with your squad or simply staring into the horizon, it is sure to be picturesque.

# A home for your *car*

In a city that makes you wish you didn't own a car every time you looked for parking, we've got you. We've got you twelve whole floors of parking. We know that a car is an extension of yourself. It deserves the luxury of space as it battles for it in the hustle and bustle of the city.



## Surface Car Parking



Drive-in ramp to each level



Independent surface car parking



Electric car charging stations

# It's *safe* in the sky

Even though security is a given, it is one of the most important features of our society. Our trained professionals work quietly behind the scenes ensuring safety to you and your family, so that you enjoy your international lifestyle uninterrupted.



Visitor Management System



Building Management System

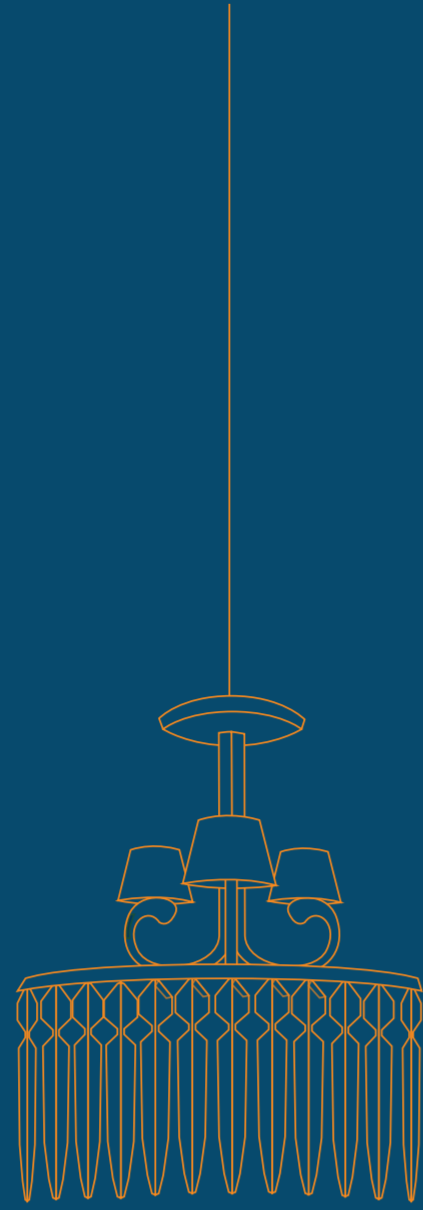


CCTV

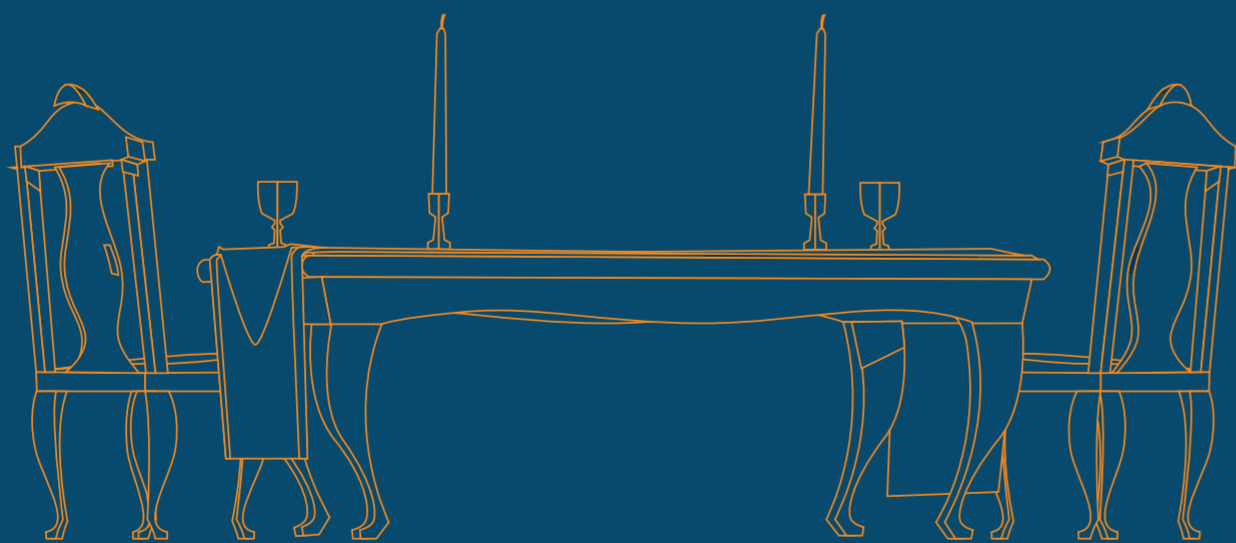


Professional Security





## *Apartments*



# Living Room



## *Dining Room*





*Bed*



Shot on location

*Bath*



Shot on location



*Kitchen*

Shot on location

## To reach the sky you need strong foundation values



Design Centric

Big problems can be solved by good design. And good design comes with an eye for detail.



Innovative

The best cutting-edge innovations are those which come after a strong pursuit of research and development.



Customer First Mindset

All our projects are built around people. Every decision made is sensitive to the needs of our customers.

## The Prescon Group

Prescon Group, a boutique real estate development company, has delivered projects in multiple asset classes and in multiple geographies for over four decades. Having developed more than 2 million square feet over six projects in prime areas of Goregaon, Malad and Borivali in joint ventures with other developers; the Group started autonomous operations in 1994 under the name 'Prestige Constructions'. The name enjoys tremendous goodwill in Thane, which is backed by the trust of 2000+ families happily settled in five 'Prestige' projects here with a development of over a million square feet.

With a long term vision on real estate, the Group rebranded as 'PRESCON' in the year 2005 and expanded operations in Rajasthan and Goa with development of gated communities / mixed-use townships. Prescon's design centricity, reliability and trust has always commanded a premium on all projects, that too with minimal marketing spends and maximum referral sales.

Known to be dependable, the Group has an impeccable record of completing projects on time, due to which PRESCON enjoys tremendous goodwill in all the micro-markets they operate in.

## Prescon Milestones

Completed:

**19** completed projects that include residential, commercial and township projects with a total salable area of 41.29 lacs sq.ft. in Thane, Malad, Borivali and Goa

---

Ongoing:

**3** with around 1.7 million sq.ft. of residential and commercial properties under construction in Mahim, Goa and Thane

---

Upcoming:

**2** with 0.7 million sq.ft. in Malad and Goa

---

## Prescon projects



Prestige Residency, Thane



Prestige Garden, Thane



IKIGAI, Goa



Belicia, Thane



Casa Gardenia, Thane



Prescon Amanha Phase 1 & 2, Goa

# CONSULTANTS

## DESIGN CONSULTANT

Known as 'The Man Who Draws India', Architect Hafeez Contractor has received one of India's most prestigious civilian awards, the Padma Bhushan, in 2016. You can find his artistry behind airports, cricket stadiums, business parks, and even India's tallest building. Who better than Mr. Contractor to be the man who draws your home?

## STRUCTURAL CONSULTANT

Samishthi Techno Services Consultants LLP better known as STS Consultants is a team of experts based in Pune with offices in Mumbai and Nagpur. The firm is headed by industry stalwart Mr. Nandkumar Patil who carries more than 2 decades of experience in planning of high rise building structures. This team aims at taking our sophisticated concept design and developing solutions around its safe and practical solutions.

## FACADE CONSULTANT

Facade Engineering Services (FES) is a team of expert engineers closely working with architects, consultants, manufacturers and installation specialists. Their command in this domain will add on to the aesthetic design of our skyscraper attributing to world class facade design. FES takes into account the complexity in design, procurement, engineering and the wholesome execution process.

## WIND TUNNEL STUDY

CPP Australia is an international establishment providing unparalleled services in raising quality and certifications. Their studies on buildings and structures enhance the reliability of Structural performance. Wind tunnel study remains the only reliable tool to bid upon serviceability and building strength of a robust structure like us.

## LIGHT CONSULTANT

The Ministry Of Light spans the globe with an amazing array of lighting concepts that has touched the lives of millions. Having extensive expertise & competence in all aspects of lighting, the team has won several International Awards for Innovative & Energy Efficient Lighting Solutions. Over the past 15 years, they have successfully designed & commissioned over 300+ projects across Asia-Pacific. The team is all set to design lights that will be functional, dynamic and enhance your living spaces.

## LANDSCAPE ARCHITECT

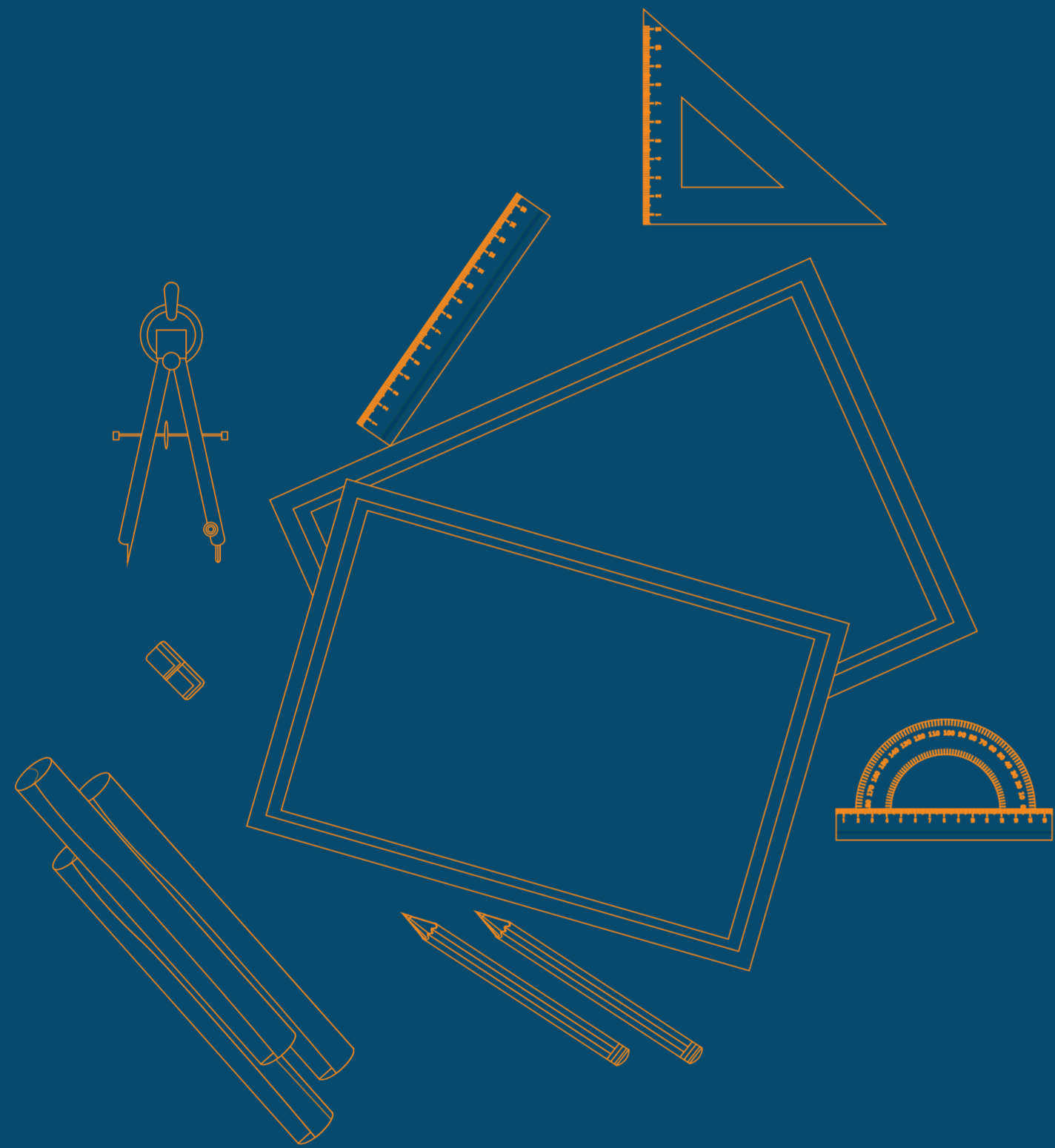
Site Concepts International (SCI) has its studios in seven countries across the globe. Their international outlook has taught them that going local is truly global. That's why their design teams not just investigate every project to determine its opportunities and constraints, they also explore locally available materials and artefacts. It's a match made in heaven for us.





## **High Life** is in the details

- Construction** - A-Class, Earthquake resistant construction with anti termite treatment; Aluminium formwork for RCC structure
- Flooring** - Branded vitrified marble finish tiles
- Wall and Ceiling** - Gypsum plaster on walls; Lustre paint for walls and plastic paint for ceilings
- Water proofing** - Waterproofing from branded company
- Windows** - Large span premium aluminium windows
- Doors** - Fire rated main door; Flush door with SS fittings
- Kitchen** - Granite kitchen counter with SS sink; Exhausts; Gas leak detectors
- Bathroom and Toilets** - Concealed plumbing with CP/ Sanitary fittings of premium brand; Branded, designer tiles and dado
- Electrical** - Concealed copper wiring in the entire flat with ELCB and MCB switches in the main board; Adequate points for lights, fans and TV; Provision for cable TV and fibre internet
- Entrance Lobby/ Lifts** - Designer entrance lobby; High speed, Modern, Automatic lifts of reputed make for the building and parking levels
- External Finish** - Entire building painted with weatherproof external grade texture paint
- Safety/ Parking** - Advanced fire fighting systems; Gas - leak detectors; Intercom facility; Certified 24 x 7 guards; 2 - Tier security; Visitor management system
- Air-conditioning** - Sleeve provision for AC in all bedrooms and living/ dining areas



*Plans*

## GROUND FLOOR PLAN

### LEGEND

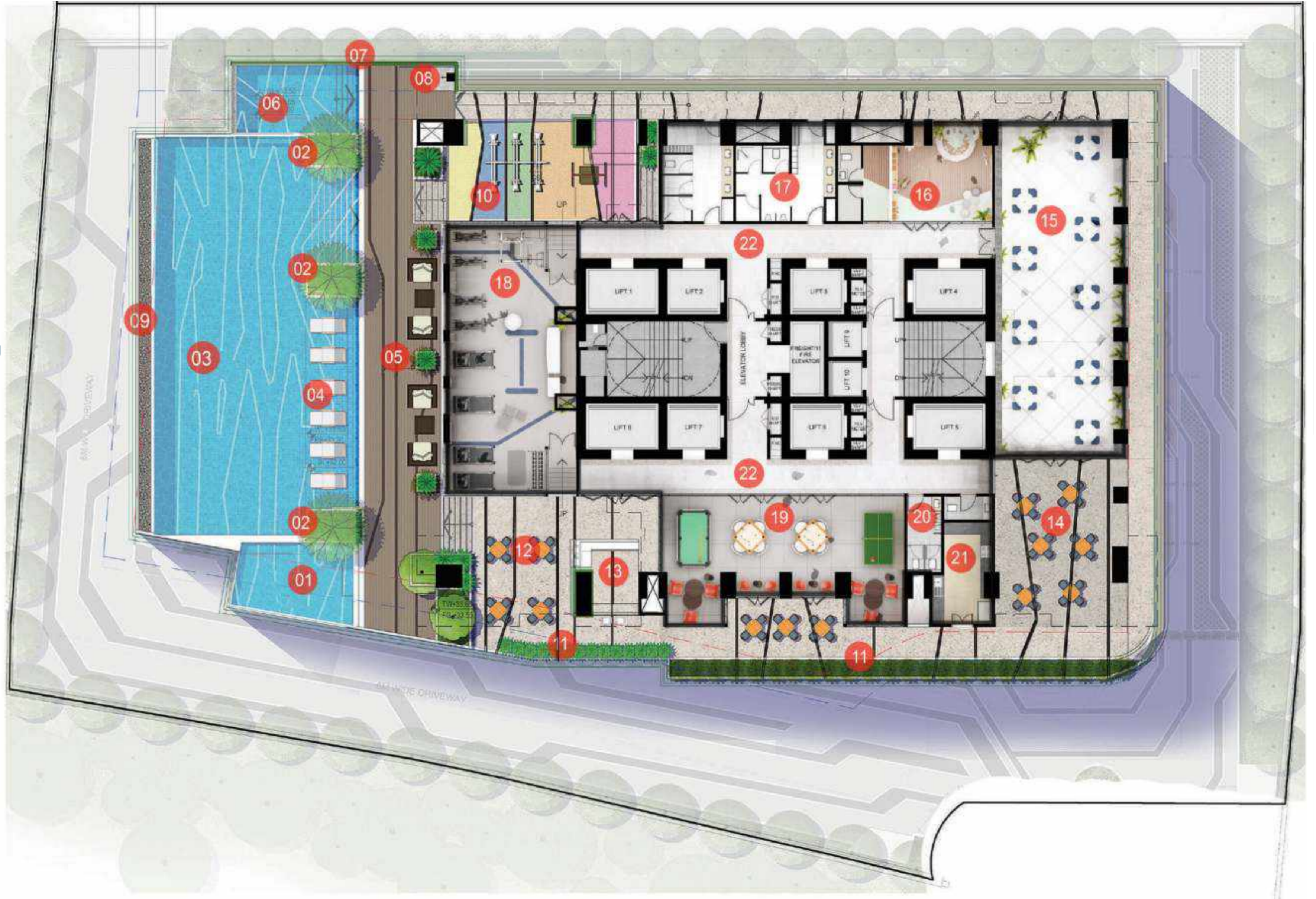
- 01. Driveway
- 02. Guardhouse
- 03. Focal Feature With Water Curtain
- 04. Drop-off Area
- 05. 6m Driveway
- 06. Sculpture
- 07. Multi-Purpose Court
- 08. Board Games Deck
- 09. Entry Gate
- 10. Exit Gate
- 11. Outer Lounge Area
- 12. Reception
- 13. Waiting Lounge
- 14. Society Office
- 15. Coffee Bar
- 16. Business Centre/ Library
- 17. Meeting Pods
- 18. Meter Room
- 19. Elevator Lobby
- 20. Casual Lounge Seating (Indoor)
- 21. BMS Room



## E-DECK PLAN

### LEGEND

- 01. Jacuzzi
- 02. Pool Planter
- 03. Main Lap Pool
- 04. Sunken Lounge
- 05. Pool Lounge
- 06. Kids' Pool
- 07. 6m Green Wall
- 08. Pool Shower
- 09. Infinity Edge pool
- 10. Kids Play Area
- 11. Green Ledge Planting
- 12. Open Café
- 13. Bar
- 14. Alfresco Seating
- 15. Banquet Hall
- 16. Crèche
- 17. Changing Room
- 18. Gym
- 19. Gaming Room
- 20. Powder Room
- 21. Pantry
- 22. Elevator Lobby





## TERRACE LEVEL PLAN

### LEGEND

- 01. Jogging Track
- 02. Rooftop Garden Lounge
- 03. Seating Lounge
- 04. Outdoor Dining
- 05. BBQ Area
- 06. Focal Sculpture
- 07. Seating Alcove
- 08. Rooftop Outdoor Cinema
- 09. Cinema Screen
- 10. Yoga Deck



# FLOOR PLAN 1<sup>ST</sup> TO 25<sup>TH</sup> (JODI OPTION) (Except Refuge Floor 1<sup>st</sup>, 8<sup>th</sup>, 15<sup>th</sup>, 22<sup>nd</sup>)

**3 BHK UNIT PLAN**

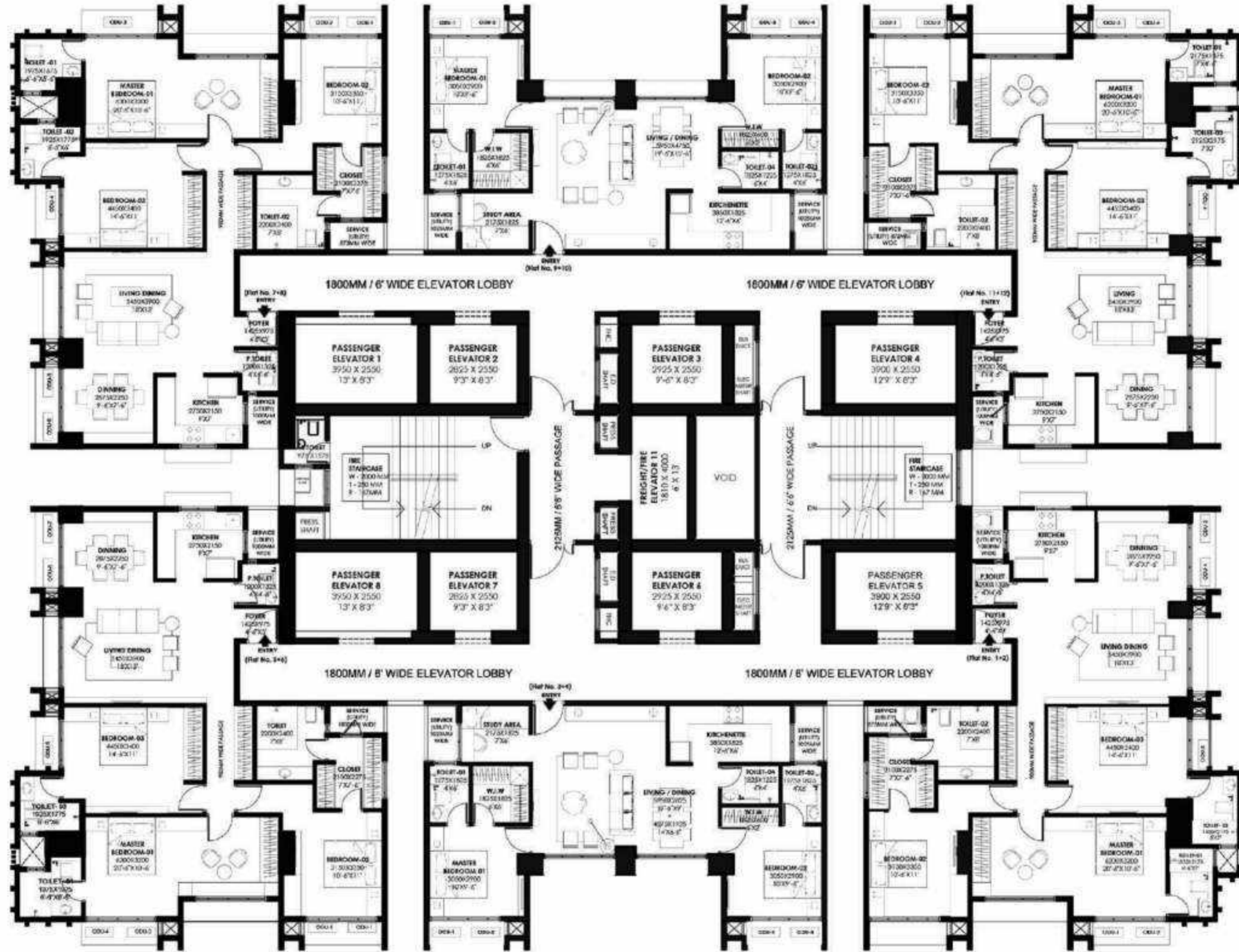
PARTICULARS	UNIT NO. 7	UNIT NO. 8	TOTAL
RERA CARPET AREA (SQ.FT)	560	580	1140

**2.5 BHK UNIT PLAN**

PARTICULARS	UNIT NO. 9	UNIT NO. 10	TOTAL
RERA CARPET AREA (SQ.FT)	365	365	730

**3 BHK UNIT PLAN**

PARTICULARS	UNIT NO. 11	UNIT NO. 12	TOTAL
RERA CARPET AREA (SQ.FT)	580	560	1140



**3 BHK UNIT PLAN**

PARTICULARS	UNIT NO. 5	UNIT NO. 6	TOTAL
RERA CARPET AREA (SQ.FT)	580	560	1140

**2.5 BHK UNIT PLAN**

PARTICULARS	UNIT NO. 3	UNIT NO. 4	TOTAL
RERA CARPET AREA (SQ.FT)	365	365	730

**3 BHK UNIT PLAN**

PARTICULARS	UNIT NO. 1	UNIT NO. 2	TOTAL
RERA CARPET AREA (SQ.FT)	560	580	1140



# TYPICAL FLOOR PLAN 26<sup>TH</sup> TO 35<sup>TH</sup> (Except Refuge Floor 29<sup>th</sup>)

**3 BHK UNIT PLAN**

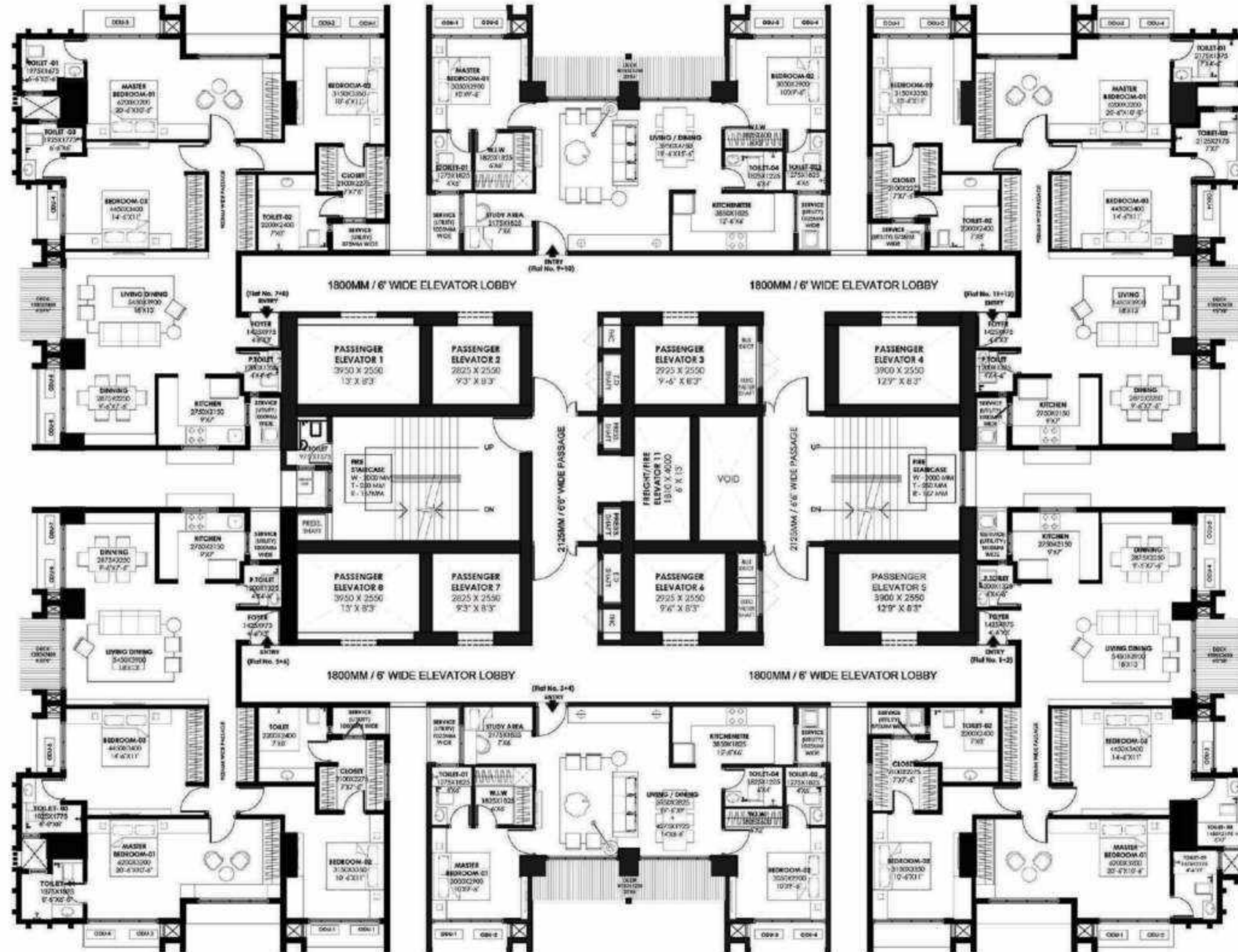
PARTICULARS	UNIT NO. 7	UNIT NO. 8	TOTAL
RERA CARPET AREA (SQ.FT)	564	580	1144
DECK (SQ.FT.)	36	0	36

**2.5 BHK UNIT PLAN**

PARTICULARS	UNIT NO. 9	UNIT NO. 10	TOTAL
RERA CARPET AREA (SQ.FT)	368	368	736
DECK (SQ.FT.)	42	42	84

**3 BHK UNIT PLAN**

PARTICULARS	UNIT NO. 11	UNIT NO. 12	TOTAL
RERA CARPET AREA (SQ.FT)	580	564	1144
DECK (SQ.FT.)	0	36	36



**3 BHK UNIT PLAN**

PARTICULARS	UNIT NO. 5	UNIT NO. 6	TOTAL
RERA CARPET AREA (SQ.FT)	580	564	1144
DECK (SQ.FT.)	0	36	36

**2.5 BHK UNIT PLAN**

PARTICULARS	UNIT NO. 3	UNIT NO. 4	TOTAL
RERA CARPET AREA (SQ.FT)	368	368	736
DECK (SQ.FT.)	42	42	84

**3 BHK UNIT PLAN**

PARTICULARS	UNIT NO. 1	UNIT NO. 2	TOTAL
RERA CARPET AREA (SQ.FT)	564	580	1144
DECK (SQ.FT.)	36	0	36





RISING SUN IMPEX PVT. LTD. ( A PRESCON GROUP CO.)

Corporate address:

201, Prestige Precinct, Almeida Road, Panchpakhadi, Near Nitin Casting,  
Thane West - 400 601

Site address:

Sales Office, Off Cadel Road, Mahim West, Mumbai - 400 016

Website: [www.presconmidtownbay.in](http://www.presconmidtownbay.in) | Email: [sales@prescon.in](mailto:sales@prescon.in)

Co-Developer



The project has been registered via MahaRERA Registration No. P51900030390 is available on the website <https://maharera.mahaonline.gov.in> under registered projects.  
Disclaimer: The plans, specification, elevation, conceptual designs, visuals, images, computer generated images, dimensions, photograph, furniture, fixtures, amenities, facilities, etc., are strictly provided for representation purpose only and are subject to requisite approvals from the competent authorities unless otherwise stated herein. This does not constitute an offer and/or contract of any nature between the company and the prospective purchaser/ customer has independently satisfied himself before any conclusive decision. All brand names and trademarks stands reserved.  
Passcode Miracle Bay is used for marketing purpose only. \*T&C Apply. March 2023.